

# Inquiry List for Residential Support Services

For more information, please contact us from the list below.

Number	Service Name	Eligible Persons *Please inquire for details	Cost (★)No cost for tax-exempt and public assistance households	Contact for inquiries
①	<b>Residence change consultation</b>	Elderly households, households with disabilities, single-parent households, etc.	Free of charge	Housing Support Section, Housing Division 5273-3567
②	<b>Tenant Consultation Service</b>	Anyone	Free of charge	HomeNet Corporation 0120-460-560
③	<b>Residential Support Service</b>	For people with disabilities who need assistance with moving in, etc.	Free of charge	Welfare Center for the Disabled(3232-3711) Community Activity Support Center (for the mentally disabled) Mado(3200-9376) Lavance(3364-1603) Faro(3350-4438) "Wind"(3952-6014)
④	<b>Subsidy for rent and other debt guarantees</b>	Elderly households, households with disabilities, single-parent households	Subsidy	Housing Support Section, Housing Division 5273-3567
⑤	<b>Housing Security Grant</b>	For those who have lost or are in danger of losing their housing due to economic hardship caused by separation from employment, etc.	Benefit for those who have lost or are in danger of losing their housing	Livelihood Support Consultation Section 5273-3853
⑥	<b>Mimamotte TEL Plus</b>	Elderly people	Paid	HomeNet Corporation 0120-240-343
⑦	<b>Community watch-over cooperator business</b>	For those who are 75 years old or older living alone, households with only one member 75 years old or older, or those who live alone during the daytime, etc. and wish to be looked after by a community watchman.	Free of charge	Shinjuku City Council of Social Welfare 5273-9191
⑧	<b>Distribution of "Nukumori Dayori" newsletter</b>	For those 75 years of age or older living alone *Detailed conditions apply.	Free of charge	Senior Citizen Consultation Section 2, Senior Citizen Support Division 5273-4594
⑨	<b>Emergency call system</b>	Persons 65 years old and over *Detailed conditions apply.	10% of installation cost (★)	Senior Citizen Support Section, Senior Citizen Support Division 5273-4305
		Persons with severe disabilities (Level 1 or 2 of the certificate) or intractable diseases who are 18 years old or older and single		Welfare Promotion Section, Disabled Persons Welfare Division 5273-4516
⑩	<b>Fire safety system</b>	Persons 65 years old and over *Detailed conditions apply.	10% of installation costs, etc. (★)	Senior Citizen Support Section, Senior Citizen Support Division 5273-4305
⑪	<b>Home improvement /Home equipment repair</b>	Persons 65 years old and over, etc *Detailed conditions apply.	10-30% of renovation costs	Benefits Section, Long-Term Care Insurance Division 5273-4176
⑫	<b>Home Improvement</b>	People with physical or intellectual disabilities or intractable diseases *Detailed conditions apply.	Co-payment based on income, etc.	Support Section, Disability Welfare Division 5273-4583
⑬	<b>Door-to-door collection of resources and garbage</b>	Persons 65 years old and over who need nursing care, etc.	Free of charge	Shinjuku Cleaning Office 3950-2923
⑭	<b>A little bit of support for daily life</b>	Anyone	Charged according to the service (800 yen/hour)	Shinjuku City Council of Social Welfare 5273-9191
⑮	<b>Emergency Small Loan Program</b>	Households with low income	Interest-free loans	Shinjuku City Council of Social Welfare 5273-3541
⑯	<b>Subsidies for insurance premiums to cover the cost of sorting out remaining household goods, etc.</b>	Single elderly person	Subsidy	Housing Support Section, Housing Division 5273-3567
⑰	<b>Residency continuity support</b>	Elderly households, households with disabilities, single-parent households	Subsidy	Housing Support Section, Housing Division 5273-3567

## Shinjuku City Residence Support Service Guide

Printed Material Production Number  
(2022-8-4014)

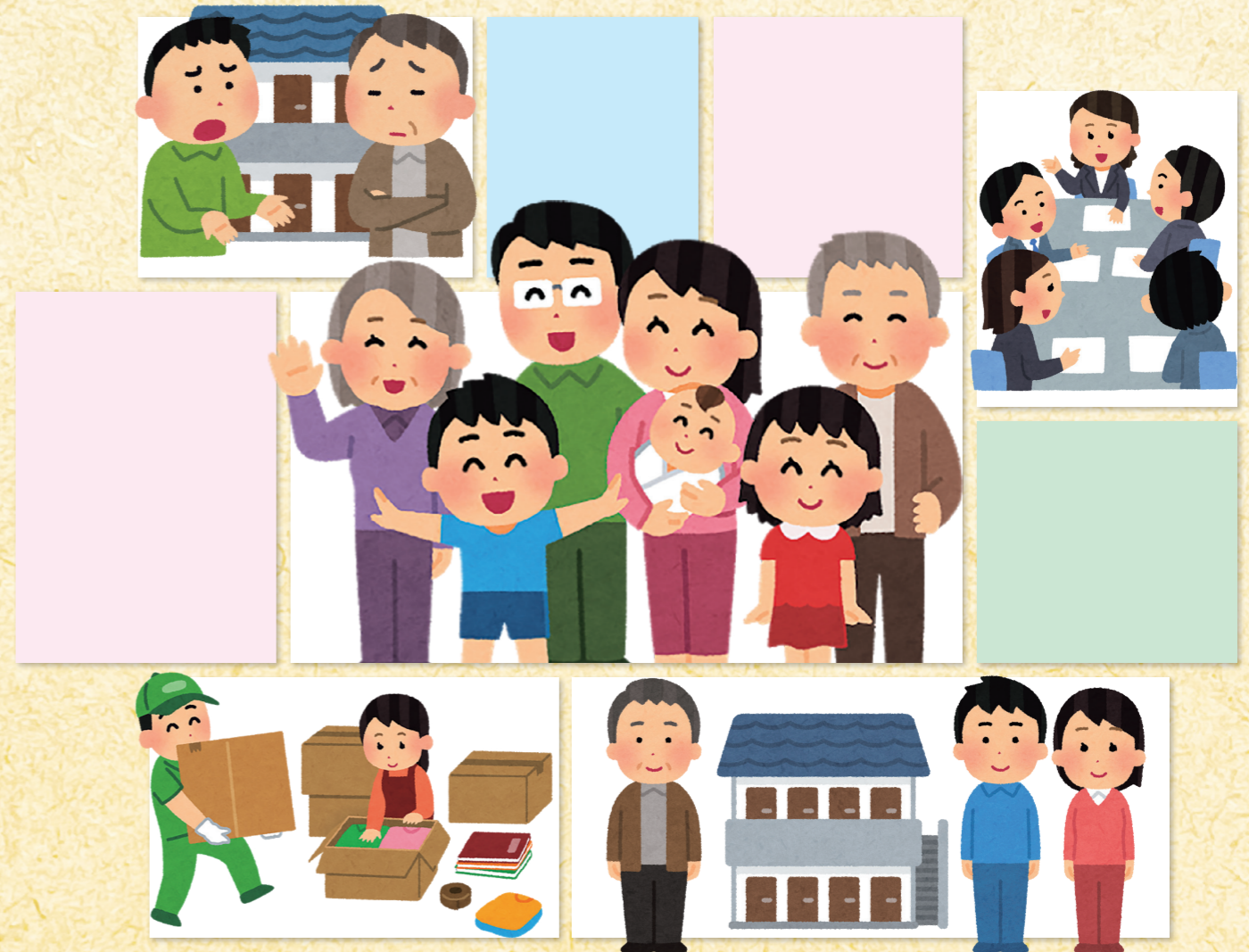
Issued in March 2023

Edited and published by  
Shinjuku City Residence  
Support Council  
\*Machine translation is used.

**Shinjuku City Residence Support Council Website**  
[https://www.city.shinjuku.lg.jp/seikatsu/jutaku01\\_000001\\_000002.html](https://www.city.shinjuku.lg.jp/seikatsu/jutaku01_000001_000002.html)  
**Shinjuku City Housing Division Website**  
<https://www.city.shinjuku.lg.jp/soshiki/401500jutaku.html>

March 2023

# Shinjuku City Residence Support Service Guide

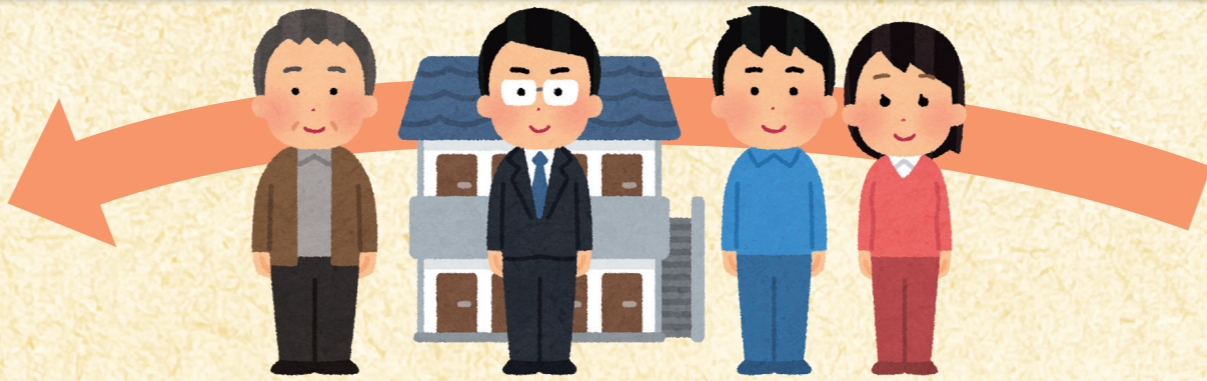


This service guide is intended to provide information on various types of assistance from finding housing to assistance during the move-in and move-out process. Please take advantage of the services provided by the member organizations of the Shinjuku City Residence Support Council in various aspects of housing and living.

## Shinjuku City Residence Support Council

The Shinjuku City Residence Support Council provides support for people with low incomes, disaster victims, the elderly, people with disabilities, and single-parent households who are having trouble finding or maintaining housing in Shinjuku City, to help them move smoothly into private rental housing. (Established in February 2020)

# List of housing support services available from move-in to move-out



## Before moving in

### For those looking for a place to live

**1** **W** Residence change consultation **E<sub>60</sub> D S**  
\*Consultants will help you find a home.

**2** **B** Tenant Consultation Service **Anyone**  
\*Toll-free house-hunting service

**3** **B** Residential Support Service **D**  
\*Support for people with disabilities

**16** **W** Subsidies for insurance premiums to cover the cost of organizing remaining household goods **E<sub>60</sub>**  
\*Subsidizes insurance premiums to cover the cost of organizing household goods in the event of death

### No joint guarantor

**4** **W** Subsidies for rent and other debt guarantees **E<sub>60</sub> D S**  
\*Subsidy for guarantee services in place of a guarantor

### In need of funds for moving, etc.

**15** **B** Emergency small loans (interest-free loans) and other rental services **L**  
\*Loan for necessary expenses for moving out of the house upon examination

## While moving in

**5** **W** Housing Security Grant **L**  
\*Provides an amount equivalent to rent to those who have lost or are at risk of losing their housing

**6** **B** Mimamotte TEL Plus **E<sub>60</sub>**  
\*Twice-weekly safety confirmation calls  
Up to 1,000,000 yen compensation for restoration, cleaning up of household goods, etc. in the event of death in the room

**7** **W** Community Watch-over Carpenter business **E<sub>75</sub>**  
\*Volunteers visit and talk to residents on a regular basis.

**8** **W** Distribution of "Nukumori Dayori" newsletter **E<sub>75</sub>**  
\*Volunteers visit and distribute "Nukumori Dayori" (newsletter) twice a month to keep an eye on the residents.

**9** **W** Emergency call system **E<sub>65</sub> D**  
\*Report emergencies at home via radio  
\*No cost for tax-exempt and public assistance households

**10** **W** Fire safety system **E<sub>65</sub>**  
\*Provides an induction cooker and other equipment to those who need fire safety considerations  
\*No cost for tax-exempt and public assistance households

**11** **W** Home improvement / Home equipment repair **E<sub>65</sub>**  
\*Subsidizes the cost of repairs such as installing handrails

**12** **W** Home Improvement **D**  
\*Subsidizes the cost of installing handrails and other improvements

**13** **W** Door-to-door collection of resources and garbage **E<sub>65</sub> D**  
\*Visit the doorstep and collect resources and garbage

**14** **B** A little bit of support for daily life **Anyone**  
\*Volunteers help with shopping, cleaning, etc

**15** **B** Emergency small loans (interest-free loan) and other rental service **L**  
\*Loan of necessary expenses for moving out of the house upon examination

## When moving out

### Loss of housing

**5** **W** Housing Security Grant **L**  
\*Provides an amount equivalent to rent to those who have lost or are in danger of losing their housing

### Expenses at the time of moving out

**6** **B** Mimamotte TEL Plus **E<sub>60</sub>**  
\*Twice-weekly safety confirmation calls  
Up to 1,000,000 yen compensation for restoration, cleaning up of household goods, etc. in the event of death in the room

**16** **W** Receipt of insurance proceeds for organizing remaining household goods, etc. **E<sub>60</sub>**  
\*Receipt by the bereaved family or the landlord of insurance proceeds to cover the cost of sorting out household goods in the event of death

### Eviction request

**17** **W** Residency continuity support **E<sub>65</sub> D S**  
\*Subsidies for moving expenses and rent difference

Take advantage of a variety of support services at each stage of your move-in, during your move-in, and when you move out.



## How to read this list

Please refer to this number on the reverse side for contact information.

The person who implements this service is **W** for ward offices, and **B** for business offices.

**99** **W** \*\*\*Consultation **E<sub>60</sub> D S**  
\*Consultants will help you find a house.

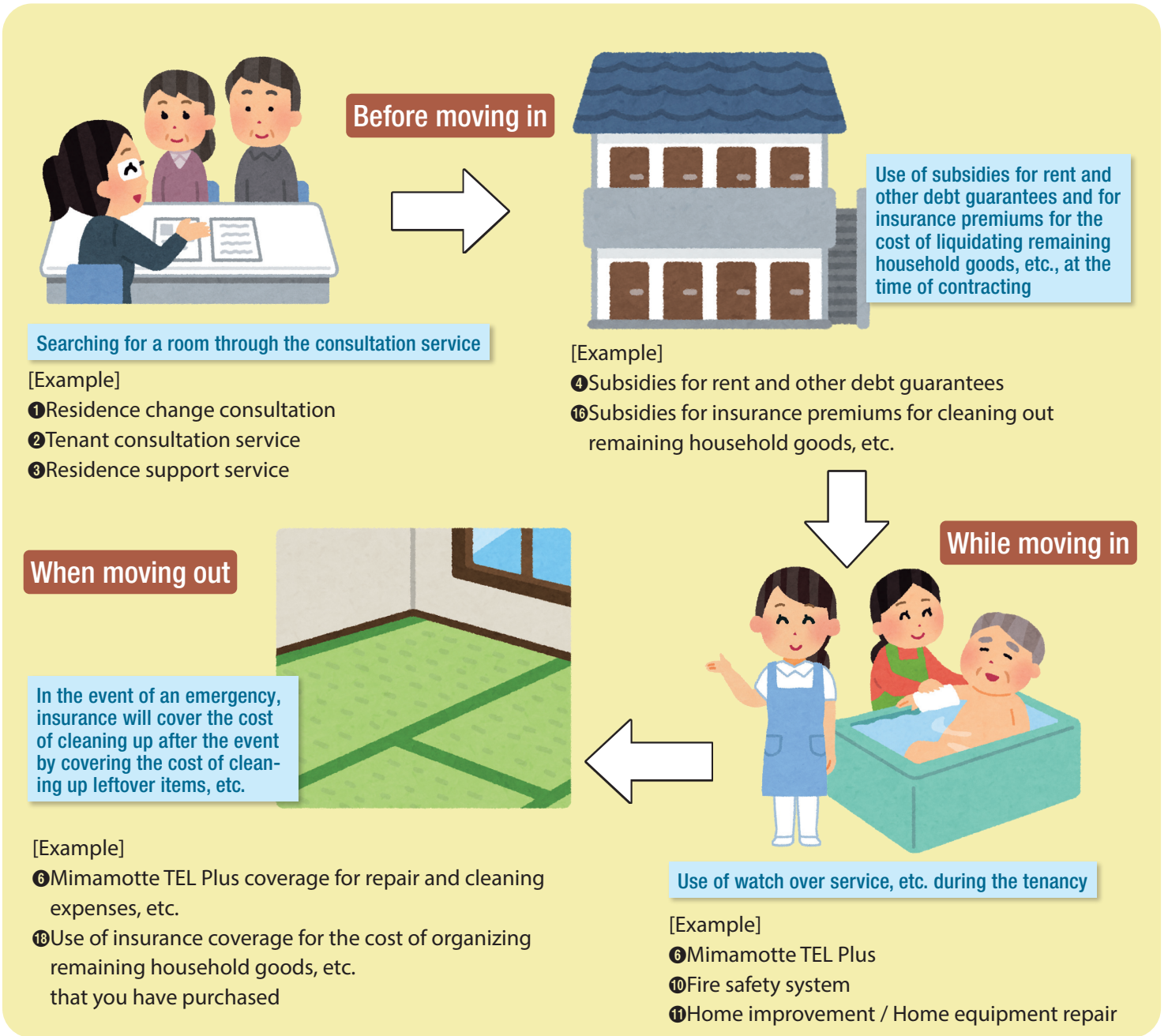
The color of the frame indicates whether there is a fee for the service or not, etc.

**Free of charge** **Charged, loan** **Subsidies, benefits**

Indicates who can use the service.

**E<sub>60</sub>** : Elderly \*Numbers indicate available age **L** : Low income earners  
**D** : Persons with disabilities **S** : Single parent family

## Examples of Service Usage Plans



## Let's make your own usage plan!

	Service Number	Service Name
Before moving in		
During move-in		
Moving out		



Fax to 03-3204-2386

Shinjuku City Urban Planning Department, Housing Division, Housing Support Section

If you have any questions about services, etc.,  
please fax this form.

The City Office or the business office will send you  
information at a later date.

○ Inquiries

**Shinjuku City Residence Support Council**

Secretariat : Shinjuku City Housing Support Section, Housing Division,

Shinjuku City Urban Planning Department

TEL 03-5273-3567 FAX 03-3204-2386

1-4-1 Kabukicho, Shinjuku-ku

Counter No. 15, 7th Floor, Shinjuku City Office Main Building

Name of person  
making inquiry

Current address or new address (mailing address for materials, etc.) and expected move-in date

〒

Address : \_\_\_\_\_ Shinjuku-ku, Tokyo \_\_\_\_\_ Room No. \_\_\_\_\_

Scheduled move-in date : Year, \_\_\_\_\_ Month, \_\_\_\_\_ Date \_\_\_\_\_

Contact person (phone number)

Questions, etc.

Real estate agency (stamps are acceptable)

Store name

Contact address