

Plastic Products are recyclable!
Please see Page 4 for more detail.

P 4

The correct way to dispose of recyclables/waste from households

The list of “Recyclables/Waste Collection Days” for your town

Page 1-2

Please place recyclables/waste at the collection point by **8:00 am on collection day.**

Recyclable resources

Recyclable papers (Newspapers, Magazines, Cardboards, Paper cartons)
Recyclable plastic,
Bottles, Cans, PET bottles, Spray cans, Cassette gas cylinders, Batteries

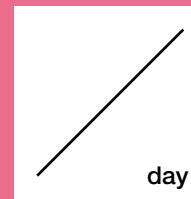
Once
per
week



day

Combustible garbage

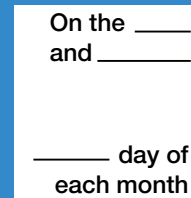
Twice
per
week



day

Metal • Ceramic • Glass

Twice
per
month



On the ____
and ____
____ day of
each month

Large Sized Waste (by application, fees apply)

Page 9

Please apply at Large Sized Waste Reception Center.

Recyclables/waste separation app

さんあ〜る available for
download



Look for this icon!

An easy and convenient way for
looking up how to separate and
dispose of recyclables/waste.



Recyclable/
Waste Collection
Days

Page 1-2

Recyclable
resources

Page 3-6

Combustible
garbage

Page 7

Metal•
Ceramic•Glass

Page 8

Large Sized
Waste

Page 9

Other inquiries

Page 10

Recycling by
manufactures

Page 11

Items that the city
will not collect

Page 12

Let's build a resource
recycling-oriented
society together

Page 13-14

Your town's "Recyclable/Waste Collection Days" List

* Recyclable resources and waste are also collected on rainy days and national holidays (excluding New Year's holiday). However, recyclable resource and waste collection may be delayed or canceled during stormy weather.

	Area (Location of recyclable/ waste collection points)	Recyclables (once per week)	Combustible garbage (twice per week)	Metal•Ceramic• Glass (twice per month)	Jurisdiction		Area (Location of recyclable/ waste collection points)	Recyclables (once per week)	Combustible garbage (twice per week)	Metal•Ceramic• Glass (twice per month)	Jurisdiction	
A	Aizumi-cho	Thu.	Tue. • Fri.	2nd • 4th Sat.	East	Ka	Kata-machi (excluding the above)	Thu.	Tue. • Fri.	2nd • 4th Mon.	East	
	Akagishita-machi	Tue.	Mon. • Thu.	1st • 3rd Wed.	East		Kabuki-cho 1, 2 chome	※	※	※	Kabuki	
	Akagimoto-machi	Tue.	Mon. • Thu.	1st • 3rd Wed.	East		Kamiochiai 1 chome	Mon.	Wed. • Sat.	2nd • 4th Thu.	Shin	
	Ageba-cho	Sat.	Mon. • Thu.	2nd • 4th Wed.	East		Kamiochiai 2 • 3 chome	Mon.	Wed. • Sat.	1st • 3rd Tue.	Shin	
	Araki-cho (21-23banchi)	Thu.	Tue. • Fri.	2nd • 4th Sat.	East		Kawada-cho	Fri.	Wed. • Sat.	2nd • 4th Tue.	East	
	Araki-cho (excluding the above)	Thu.	Tue. • Fri.	2nd • 4th Mon.	East		Ki	Kikui-cho	Mon.	Wed. • Sat.	1st • 3rd Thu.	East
	I	Ichigayakaga-cho 1, 2 chome	Sat.	Mon. • Thu.	2nd • 4th Fri.			East	Kitashinjuku 1 chome	Tue.	Mon. • Thu.	2nd • 4th Sat.
Ichigayakora-cho		Sat.	Mon. • Thu.	2nd • 4th Fri.	East	Kitashinjuku 2 chome		Mon.	Wed. • Sat.	2nd • 4th Thu.	Kabuki	
Ichigayasadohara-cho 1-3 chome	Sat.	Mon. • Thu.	2nd • 4th Fri.	East	Kitashinjuku 3 chome	Mon.		Wed. • Sat.	2nd • 4th Fri.	Kabuki		
Ichigayasana-cho	Thu.	Tue. • Fri.	2nd • 4th Mon.	East	Kitashinjuku 4 chome	Mon.		Wed. • Sat.	2nd • 4th Thu.	Shin		
Ichigayatakajo-machi	Sat.	Mon. • Thu.	2nd • 4th Fri.	East	Kita-machi (1-40 banchi, part of 41 banchi)	Sat.		Mon. • Thu.	2nd • 4th Fri.	East		
Ichigayatamachi 1 chome	Thu.	Tue. • Fri.	2nd • 4th Mon.	East	Kita-machi (part of 41 banchi)	Sat.		Mon. • Thu.	2nd • 4th Wed.	East		
Ichigayatamachi 2, 3 chome	Sat.	Mon. • Thu.	2nd • 4th Fri.	East	Kitayamabushi-cho	Tue.	Mon. • Thu.	1st • 3rd Fri.	East			
Ichigayadaimachi (1, 3, 5, 7, 9, 11, 13 ban)	Fri.	Wed. • Sat.	2nd • 4th Tue.	East	Sa	Saikyu-machi	Sat.	Mon. • Thu.	2nd • 4th Fri.	East		
Ichigayadaimachi (excluding the above)	Fri.	Wed. • Sat.	2nd • 4th Thu.	East		Samon-cho (1-2 banchi, 6-12 banchi, 16-20 banchi)	Wed.	Tue. • Fri.	1st • 3rd Mon.	East		
Ichigayachoenji-machi	Thu.	Tue. • Fri.	2nd • 4th Mon.	East		Samon-cho (excluding the above)	Wed.	Tue. • Fri.	1st • 3rd Sat.	East		
Ichigayanakano-cho	Fri.	Wed. • Sat.	2nd • 4th Tue.	East	Shi	Shinano-machi (12-34 banchi)	Wed.	Tue. • Fri.	1st • 3rd Mon.	East		
Ichigayahachiman-cho	Thu.	Tue. • Fri.	2nd • 4th Mon.	East		Shinano-machi (excluding the above)	Wed.	Tue. • Fri.	1st • 3rd Sat.	East		
Ichigayafunagawara-mchi (1, 3-8, 12, 14 banchi)	Sat.	Mon. • Thu.	2nd • 4th Fri.	East		Shimoochiai 1 chome	Fri.	Wed. • Sat.	1st • 3rd Thu.	Shin		
Ichigayafunagawara-machi (excluding the above)	Sat.	Mon. • Thu.	2nd • 4th Wed.	East		Shimoochiai 2-4 chome	Tue.	Mon. • Thu.	2nd • 4th Wed.	Shin		
Ichigayahonmura-cho	Thu.	Tue. • Fri.	2nd • 4th Mon.	East		Shimomiyabi-cho	Sat.	Mon. • Thu.	2nd • 4th Wed.	East		
Ichigayakuoji-machi (1-15 ban)	Mon.	Wed. • Sat.	1st • 3rd Tue.	East		Shirogane-cho (12-18 banchi)	Sat.	Mon. • Thu.	2nd • 4th Wed.	East		
Ichigayakuoji-machi (excluding the above)	Fri.	Wed. • Sat.	2nd • 4th Tue.	East		Shirogane-cho (excluding the above)	Tue.	Mon. • Thu.	1st • 3rd Wed.	East		
Ichigayayanagi-cho (1-7, 45, 46, 48-50 banchi, part of 47 banchi)	Tue.	Mon. • Thu.	1st • 3rd Fri.	East		Shin-ogawa-machi	Sat.	Mon. • Thu.	2nd • 4th Wed.	East		
Ichigayayanagi-cho (8-11, 23-35 banchi)	Mon.	Wed. • Sat.	1st • 3rd Tue.	East		Shinjuku 1 chome	Wed.	Tue. • Fri.	1st • 3rd Sat.	East		
Ichigayayanagi-cho (15-22, 37-43 banchi)	Fri.	Wed. • Sat.	2nd • 4th Tue.	East		Shinjuku 2 chome	Wed.	Tue. • Fri.	2nd • 4th Sat.	East		
Ichigayayanagi-cho (part of 47banchi)	Mon.	Wed. • Sat.	1st • 3rd Thu.	East		Shinjuku 3 chome	※	※	※	Kabuki		
Ichigayayamabushi-cho	Tue.	Mon. • Thu.	1st • 3rd Fri.	East		Shinjuku 4 chome	Fri.	※	※	Kabuki		
Iwato-cho (1-8 banchi, 25-27 banchi)	Tue.	Mon. • Thu.	1st • 3rd Fri.	East		Shinjuku 5 chome (1-16 ban)	Wed.	Tue. • Fri.	1st • 3rd Mon.	Kabuki		
Iwato-cho (9 banchi, 11-23 banchi, part of 10 banchi)	Sat.	Mon. • Thu.	2nd • 4th Wed.	East	Shinjuku 5 chome (17, 18 ban)	※	※	※	Kabuki			
Iwato-cho (part of 10 banchi)	Sat.	Mon. • Thu.	2nd • 4th Fri.	East	Shinjuku 6-7 chome	Wed.	Tue. • Fri.	2nd • 4th Mon.	Kabuki			
E	Enoki-cho (79 banchi)	Mon.	Wed. • Sat.	1st • 3rd Tue.	East	Su	Suido-cho	Tue.	Mon. • Thu.	1st • 3rd Wed.	East	
	Enoki-cho (excluding the above)	Tue.	Mon. • Thu.	1st • 3rd Fri.	East		Suga-cho	Wed.	Tue. • Fri.	1st • 3rd Mon.	East	
O	Okubo 1 chome	Sat.	Tue. • Fri.	1st • 3rd Thu.	Kabuki		Sumiyoshi-cho (1, 2 ban)	Thu.	Tue. • Fri.	2nd • 4th Sat.	East	
	Okubo 2 • 3 chome	Thu.	Tue. • Fri.	1st • 3rd Mon.	Shin		Sumiyoshi-cho (3, 4 ban)	Fri.	Wed. • Sat.	2nd • 4th Thu.	East	
Ka	Kaitai-cho	Tue.	Mon. • Thu.	1st • 3rd Wed.	East	Sumiyoshi-cho (5-15 ban)	Fri.	Wed. • Sat.	2nd • 4th Tue.	East		
	Kaguragashi	Sat.	Mon. • Thu.	2nd • 4th Wed.	East	Ta	Daikyo-cho	Wed.	Tue. • Fri.	1st • 3rd Sat.	East	
	Kagurazaka 1-4 chome	Sat.	Mon. • Thu.	2nd • 4th Wed.	East		Takadanobaba 1 • 2 chome	Thu.	Tue. • Fri.	2nd • 4th Mon.	Shin	
	Kagurazaka 5 chome (21-24 banchi)	Tue.	Mon. • Thu.	1st • 3rd Fri.	East		Takadanobaba 3 • 4 chome	Fri.	Wed. • Sat.	2nd • 4th Tue.	Shin	
	Kagurazaka 5 chome (excluding the above)	Sat.	Mon. • Thu.	2nd • 4th Wed.	East	Tansu-machi (1-32 banchi)	Tue.	Mon. • Thu.	1st • 3rd Fri.	East		
	Kagurazaka 6 chome (2-39 banchi)	Tue.	Mon. • Thu.	1st • 3rd Wed.	East	Ta	Tansu-machi (33-43 banchi, part of 44 banchi)	Sat.	Mon. • Thu.	2nd • 4th Fri.	East	
	Kagurazaka 6 chome (excluding the above)	Tue.	Mon. • Thu.	1st • 3rd Fri.	East		Tansu-machi (part of 44 banchi)	Sat.	Mon. • Thu.	2nd • 4th Wed.	East	
	Kasumigaoka-machi	Wed.	Tue. • Fri.	1st • 3rd Mon.	East	Tsu	Tsukiji-machi	Tue.	Mon. • Thu.	1st • 3rd Wed.	East	
	Kata-machi (5, 8 banchi)	Fri.	Wed. • Sat.	2nd • 4th Tue.	East		Tsukudo-cho	Sat.	Mon. • Thu.	2nd • 4th Wed.	East	
							Tsukudohachiman-cho (1 banchi)	Sat.	Mon. • Thu.	2nd • 4th Wed.	East	
						Tsukudohachiman-cho (excluding the above)	Tue.	Mon. • Thu.	1st • 3rd Wed.	East		

Recyclable/
Waste Collection Days

Recyclable resources

Combustible garbage

Metal•Ceramic•Glass

Large Sized Waste

Other inquiries

Recycling by
manufactures

Items that the city
will not collect

Let's build a resource recycling-
oriented society together

Metal/ceramic/glass garbage is collected on “each day of the week that corresponds to the 1st and 3rd” or “each day of the week that corresponds to the 2nd and 4th” of that month. There are no collections on the fifth day of the week of the month.

	Area (Location of recyclable/ waste collection points)	Recyclables (once per week)	Combustible garbage (twice per week)	Metal・Ceramic・ Glass (twice per month)	Jurisdiction	
Te	Tenjin-cho (63-85 banchi)	Tue.	Mon.・Thu.	1st・3rd Fri.	East	
	Tenjin-cho (excluding the above)	Tue.	Mon.・Thu.	1st・3rd Wed.	East	
To	Totsuka-machi 1 chome	Wed.	Tue.・Fri.	2nd・4th Sat.	Shin	
	Tomihisa-cho (8, 9 banchi)	Thu.	Tue.・Fri.	2nd・4th Sat.	East	
	Tomihisa-cho (excluding the above)	Fri.	Wed.・Sat.	2nd・4th Thu.	East	
	Toyama 1, 3 chome	Wed.	Tue.・Fri.	2nd・4th Sat.	Shin	
	Toyama 2 chome	Thu.	Tue.・Fri.	2nd・4th Mon.	Shin	
	Na	Naito-machi	Thu.	Tue.・Fri.	2nd・4th Sat.	East
Na	Nakai 1, 2 chome	Mon.	Wed.・Sat.	1st・3rd tue.	Shin	
	Nakaochiai 1, 2 chome	Tue.	Mon.・Thu.	1st・3rd Fri.	Shin	
	Nakaochiai 3 chome	Sat.	Mon.・Thu.	1st・3rd Fri.	Shin	
	Nakaochiai 4 chome	Sat.	Mon.・Thu.	1st・3rd Wed.	Shin	
	Nakazato-cho	Tue.	Mon.・Thu.	1st・3rd Wed.	East	
	Naka-cho	Sat.	Mon.・Thu.	2nd・4th Fri.	East	
	Nando-machi	Sat.	Mon.・Thu.	2nd・4th Fri.	East	
	Ni	Nishiochiai 1 chome	Sat.	Mon.・Thu.	1st・3rd Wed.	Shin
		Nishiochiai 2-4 chome	Sat.	Mon.・Thu.	2nd・4th Fri.	Shin
		Nishigoken-cho	Tue.	Mon.・Thu.	1st・3rd Wed.	East
Nishishinjuku 1 chome		※	※	※	Kabuki	
Nishishinjuku 2, 3 chome		Thu.	Wed.・Sat.	1st・3rd Mon.	Kabuki	
Nishishinjuku 4 chome		Thu.	Wed.・Sat.	1st・3rd Fri.	Kabuki	
Nishishinjuku 5 chome		Mon.	Wed.・Sat.	2nd・4th Thu.	Kabuki	
Nishishinjuku 6 chome		Sat.	Mon.・Thu.	1st・3rd Wed.	Kabuki	
Nishishinjuku 7, 8 chome		Tue.	Mon.・Thu.	2nd・4th Wed.	Kabuki	
Nishiwaseda 1, 3 chome		Wed.	Tue.・Fri.	1st・3rd Sat.	Shin	
Nishiwaseda 2 chome		Wed.	Tue.・Fri.	2nd・4th Sat.	Shin	
Nijutsuki-machi		Sat.	Mon.・Thu.	2nd・4th Fri.	East	
Ha		Haraikata-machi	Sat.	Mon.・Thu.	2nd・4th Fri.	East
		Hara-machi 1 chome (14-17 banchi)	Fri.	Wed.・Sat.	2nd・4th Tue.	East
	Hara-machi 1 chome (excluding the above)	Mon.	Wed.・Sat.	1st・3rd Thu.	East	
	Hara-machi 2 chome (part of 1-8 banchi, 9-12 banchi, 30-43 banchi)	Fri.	Wed.・Sat.	2nd・4th Tue.	East	
	Hara-machi 2 chome (excluding the above)	Mon.	Wed.・Sat.	1st・3rd Thu.	East	
	Hara-machi 3 chome (1-9 banchi, 84-89 banchi)	Fri.	Wed.・Sat.	2nd・4th Tue.	East	
	Hara-machi 3 chome (excluding the above)	Mon.	Wed.・Sat.	1st・3rd Thu.	East	
	Babashita-cho (60-63 banchi)	Mon.	Wed.・Sat.	1st・3rd Tue.	East	
	Babashita-cho (excluding the above)	Mon.	Wed.・Sat.	1st・3rd Thu.	East	
	Hi	Higashienoki-cho	Tue.	Mon.・Thu.	1st・3rd Fri.	East
Higashigoken-cho		Tue.	Mon.・Thu.	1st・3rd Wed.	East	
Hi	Hyakunin-cho 1 cho	Fri.	Mon.・Thu.	1st・3rd Sat.	Kabuki	
	Hyakunin-cho 2 chome	Sat.	Tue.・Fri.	1st・3rd Wed.	Kabuki	
	Hyakunin-cho 3, 4 chome	Fri.	Wed.・Sat.	1st・3rd Thu.	Shin	

	Area (Location of recyclable/ waste collection points)	Recyclables (once per week)	Combustible garbage (twice per week)	Metal・Ceramic・ Glass (twice per month)	Jurisdiction	
Fu	Fukuro-machi	Sat.	Mon.・Thu.	2nd・4th Wed.	East	
	Funa-machi (1-6 banchi)	Thu.	Tue.・Fri.	2nd・4th Mon.	East	
	Funa-machi (excluding the above)	Thu.	Tue.・Fri.	2nd・4th Sat.	East	
He	Benten-cho (1-30 banchi, 106-176 banchi)	Mon.	Wed.・Sat.	1st・3rd Thu.	East	
	Benten-cho (32-105 banchi)	Tue.	Mon.・Thu.	1st・3rd Fri.	East	
	Benten-cho (177, 178 banchi)	Mon.	Wed.・Sat.	1st・3rd Tue.	East	
Mi	Minami-cho	Sat.	Mon.・Thu.	2nd・4th Fri.	East	
	Minamienoki-cho	Tue.	Mon.・Thu.	1st・3rd Fri.	East	
	Minamimoto-machi	Wed.	Tue.・Fri.	1st・3rd Mon.	East	
	Minamiyamabushi-cho	Sat.	Mon.・Thu.	2nd・4th Fri.	East	
Ya	Yamabuki-cho (1, 11-21, 81-131, 291, 331 banchi)	Tue.	Mon.・Thu.	1st・3rd Fri.	East	
	Yamabuki-cho (4-7, 258-270, 293-318 banchi)	Tue.	Mon.・Thu.	1st・3rd Wed.	East	
	Yamabuki-cho (332-366 banchi)	Mon.	Wed.・Sat.	1st・3rd Tue.	East	
	Yarai-cho (1-111 banchi)	Tue.	Mon.・Thu.	1st・3rd Fri.	East	
	Yarai-cho (excluding the above)	Tue.	Mon.・Thu.	1st・3rd Wed.	East	
	Yo	Yokotera-machi	Tue.	Mon.・Thu.	1st・3rd Fri.	East
Yocho-machi (1-6 banchi)		Fri.	Wed.・Sat.	2nd・4th Thu.	East	
Yocho-machi (excluding the above)		Fri.	Wed.・Sat.	2nd・4th Tue.	East	
Yotsuya 1 chome (1, 2 banchi, 6 ban, 9-18 banchi)		Wed.	Tue.・Fri.	1st・3rd Mon.	East	
Yotsuya 1 chome (excluding the above)		Thu.	Tue.・Fri.	2nd・4th Mon.	East	
Yotsuya 2 chome (1, 4-8, 11, 14 banchi)		Wed.	Tue.・Fri.	1st・3rd Mon.	East	
Yotsuya 2 chome (excluding the above)		Thu.	Tue.・Fri.	2nd・4th Mon.	East	
Yotsuya 3 chome (1, 4, 5, 8 banchi)		Wed.	Tue.・Fri.	1st・3rd Mon.	East	
Yotsuya 3 chome (2, 3, 6, 7 banchi)		Thu.	Tue.・Fri.	2nd・4th Mon.	East	
Yotsuya 3 chome (9, 12・13 banchi)		Wed.	Tue.・Fri.	1st・3rd Sat.	East	
Yotsuya 3 chome (10, 11, 14 banchi)		Thu.	Tue.・Fri.	2nd・4th Sat.	East	
Yotsuya 4 chome (1, 4-7, 25-32 banchi, part of 33, 34 banchi)		Wed.	Tue.・Fri.	1st・3rd Sat.	East	
Yotsuya 4 chome (2, 3, 8-24 banchi, part of 33, 34 banchi)		Thu.	Tue.・Fri.	2nd・4th Sat.	East	
Yotsuyasaka-machi		Thu.	Tue.・Fri.	2nd・4th Mon.	East	
Yotsuya-San-ei-cho		Thu.	Tue.・Fri.	2nd・4th Mon.	East	
Yotsuyahonshio-cho		Thu.	Tue.・Fri.	2nd・4th Mon.	East	
Wa		Wakaba 1-3 chome	Wed.	Tue.・Fri.	1st・3rd Mon.	East
		Wakamatsu-cho (1-9 banchi)	Fri.	Wed.・Sat.	2nd・4th Tue.	East
	Wakamatsu-cho (excluding the above)	Mon.	Wed.・Sat.	1st・3rd Thu.	East	
	Wakamiya-cho	Sat.	Mon.・Thu.	2nd・4th Wed.	East	
	Waseda-machi (5, 9-12, 27 banchi)	Mon.	Wed.・Sat.	1st・3rd Thu.	East	
	Waseda-machi (excluding the above)	Mon.	Wed.・Sat.	1st・3rd Tue.	East	
	Wasedatsurumaki-cho (545, 546 banchi)	Tue.	Mon.・Thu.	1st・3rd Fri.	East	
	Wasedatsurumaki-cho (excluding the above)	Mon.	Wed.・Sat.	1st・3rd Tue.	East	
	Wasedaminami-cho	Mon.	Wed.・Sat.	1st・3rd Thu.	East	

(Note) For areas mentioning partial banchi, and those with a * mark in the collection day field, please inquire regarding the waste collection office/center that has jurisdiction. Collection days may differ for some of the large-sized apartment complexes.

**Omission of
Jurisdiction Display**

Shin : Shinjuku Waste Collection Office
☎ 03-3950-2923
FAX 03-3950-2932

East : Shinjuku-Higashi Waste Collection Center
☎ 03-3353-9471
FAX 03-3353-9505

Kabuki : Kabukicho Waste Collection Center
☎ 03-3200-5339
FAX 03-5272-3494

Recyclable resources

Recyclable paper, Recyclable plastic

Recyclable Paper

(Newspapers, Magazines, Books, Paper, Cardboards, Paper cartons etc.)

Will also be collected on rainy days.

Newspapers



Fold into four to make A4 size before taking out for disposal.

How to Dispose



Tie them in a cross with a string

Magazines, Books, Miscellaneous paper



Notebooks



Boxes for items such as food



Wrapping paper



Envelopes (Remove plastic part)



Put miscellaneous paper into paper bags or insert them in between the pages of magazines or books

How to Dispose



Tie them in a cross with a string



Copying paper



Tissue boxes (Take the plastic out first)



Plastic wrap and aluminum foil boxes (Remove metal part)

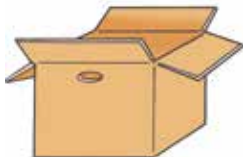


How to Dispose



Tie them in a cross with a string

Cardboard



Cardboard That which is



from a cross-sectional view



Fold to flatten

How to Dispose

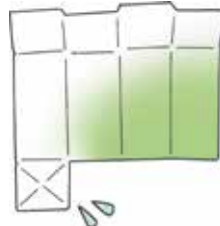


Tie them in a cross with a string

Paper carton (for beverage and food)



Wash and cut them to flatten



*See page 14.

Recyclable paper may also be collected through group collections. Please make an effort to dispose of it through group collections

Items that cannot be collected as recyclables

- Paper where the inside is coated with aluminum or plastic: Ice cream cartons, instant noodle lids, paper sake cartons, etc.
- Waterproof paper: Paper cups, etc.
- Carbon paper/non-carbon paper: Transfer paper, etc.
- Paper with strong smells: Detergent boxes, incense stick boxes, soap wrapping paper, etc.
- Sublimation transfer sheets: Iron-print paper, etc.
- Photo printing paper: Photographs, albums, inkjet printing paper, etc.
- Paper with food waste attached: Pizza/cake boxes, hamburger wrappings, etc.
- Foam paper, pressure bonded postcards, thermal paper, oil paper, stickers, shredder waste, non-woven cloth, Washi paper

Please dispose as combustible garbage.

Recyclable/Waste Collection Days
Recyclable resources
Combustible garbage
Metal-Ceramic-Glass
Large Sized Waste
Other inquiries
Recycling by manufacturers
Items that the city will not collect
Let's build a resource recycling-oriented society together

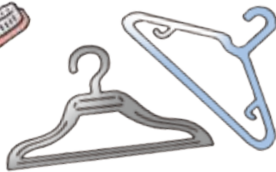
Recyclable Plastic (Plastic products, Plastic containers and packaging materials)

Plastic Products

100% plastic that are no more than 30cm in any dimensions



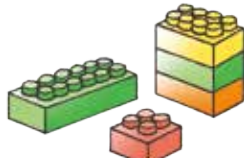
Toothbrushes



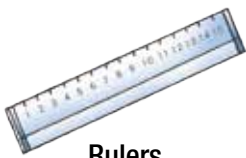
Plastic hangers



Airtight containers



Toy blocks



Rulers



Wash basins

Plastic containers and packaging materials



They have a plastic mark. (Some items may not have the mark due to shape.)

Plastics that are used to hold goods [containers] or wrap goods [packaging materials] and that become unnecessary after contents are used



Bottles



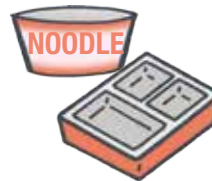
Cups



Cartons



Trays



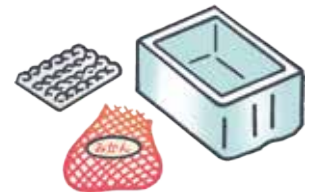
Containers



Plastic bags/film



Caps, nozzles, fasteners



Packing polystyrene, fruit netting, bubble wrap

How to Dispose

Uncleaned items can not be recyclable resources.

*It is not necessary to peel off the stickers such as price tags



Put plastic containers, packaging materials and plastic products together in a see-through plastic bag

PET bottles are not classified as Recyclable Plastic.

*See page 5.

Items that cannot be collected as recyclables

- Containers that are with residue contents or with permanent stain
- Hard plate-like objects with a thickness of 5 mm or more, such as plastic cutting boards
- Composite products with metal or, items that cannot be separated from metallic part such as knives
- Items that are larger than 30cm in any dimensions

Please dispose as combustible garbage.

Please dispose as metal · ceramic · glass.

Please dispose of as Large Sized Waste See page 9

Contamination is observed during the intermediate processing. Never mix with fire hazardous materials or medical waste

- Items with built-in small rechargeable batteries or, items that run on electricity or batteries
- Waste from home medical care (except sharp objects) (Syringes, IV bags, CAPD bags, those attached tubes, etc.)



Please dispose as metal · ceramic · glass.

Pour residue contents down the drain

Please dispose as combustible garbage.

※ Even though the plastic recycling symbols are displayed, IV bags and CAPD bags for home medical care cannot be collected as recycling resources.

Recyclable resources

Bottles, Cans, PET bottles, Spray cans, Cassette gas cylinders, Batteries

Bottles (Bottles for beverages, food, cosmetics, and medicine)



Take off the caps

Rinse lightly with water and shake off the water

How to Dispose



Put in a see-through plastic bag or Recycling Collection Bin

Please dispose of plastic lids as Recyclable Plastic.

*See page 4.

Items that cannot be collected as recyclables

●Bottles that cannot be cleaned ●Medication (besides oral medication) bottles ●Broken bottles ●Light bulbs, fluorescent lights, plate glass, cups, heat - resistant glass, ceramics, etc.

Please dispose as metal • ceramic • glass.

Cans (Aluminum cans and steel cans for beverage or food)



Please also dispose of cans for snacks, tea, etc.



Rinse lightly with water
Please completely remove all the contents of cans, especially cans for pet food.

How to Dispose



Put in a see-through plastic bag or Recycling Collection Bin

Items that cannot be collected as recyclables

●Cans that can't be cleaned out
●Cans used for purposes other than food/drink
●Large drums/kegs ●Paint cans

Please dispose as metal • ceramic • glass.

PET bottles



Items with the mark



Remove the caps and labels



Rinse lightly with water and flatten
Put in a see-through plastic bags

How to Dispose



Put in a see-through plastic bag or Recycling Collection Bin

Please dispose of PET bottle caps and labels as Recycled Plastic.

*See page 4.

Items that cannot be collected as recyclables

●PET bottles that had oil in them
●Items with content that cannot be cleaned out simply by rinsing

Please dispose as combustible garbage.

Recyclable/Waste Collection Days
 Recyclable resources
 Combustible garbage
 Metal-Ceramic-Glass
 Large Sized Waste
 Other inquiries
 Recycling by manufacturers
 Items that the city will not collect
 Let's build a resource recycling-oriented society together

Spray cans, cassette gas cylinders and Batteries

Spray cans, cassette gas cylinders



Empty these as much as possible
(Even though contents are remained, they will be collected.)



Remove caps and nozzles

Please dispose of plastic caps and nozzles as Recycled Plastic

*See page 4.

Items that cannot be collected as recyclables

Gas cartridges except cassette-type

*See page 12.

How to Dispose



Place spray cans, cassette cylinders, and dry batteries together in a see-through plastic bag or Recycling Collection Bin

Batteries (Primary Batteries: disposable batteries)



Manganese, alkaline



Lithium primary batteries:
Coin type batteries
(model number either CR or BR)

Items that cannot be collected as recyclables

● Small rechargeable batteries (Secondary Batteries)

● Button batteries (SR • PR • LR)

*See page 11.

Those batteries used in electronic thermometers, hearing aids, etc

Batteries used everyday can be broadly divided into two types: primary batteries (dry batteries) that can be used up and secondary batteries (rechargeable batteries) that can be used repeatedly.

In the resource recovery in Shinjuku City, dry batteries are collected. However, limited to button batteries (primary batteries) though, please recycle them through voluntary companies who collecting them.

- Recycling Collection Containers (bins for bottles, cans, spray cans, etc., and nets for PET bottles) are lent out for collection of bottles, cans, PET bottles, spray cans, cassette cylinders, and dry batteries
For more information, please contact your local Waste Collection Office or Waste Collection Center.

Combustible garbage

Please take combustible waste out to **the recyclable/waste collection point** twice a week on the collection day.

Recyclable/
Waste Collection Days

Recyclable resources

Combustible garbage

Metal-Ceramic-Glass

Large Sized Waste

Other inquiries

Recycling by
manufacturers

Items that the city
will not collect

Let's build a resource recycling-
oriented society together



Kitchen waste



Paper scraps

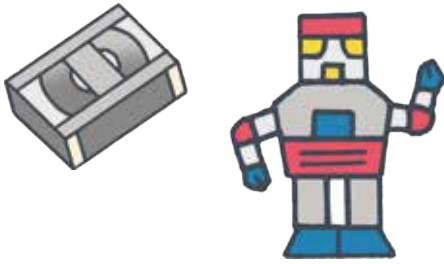
Paper that cannot be recycled

[*See page 3.](#)



Clothing, disposable diapers, sanitary goods

Remove filth before disposal.



Plastic products containing other materials than plastic



How to Dispose

Containers with lids (about 60ℓ) or See-through plastic bags



Rubber products

Please cut long hoses down to lengths of 50 cm or less.



Leather products



PET bottles and recyclable plastic that cannot be used as recyclable resources

[*See page 4 • 5.](#)



Small amounts of branches/leaves from garden plants

Cut into lengths of 50 cm or less.

[*See page 10.](#) for information on what to do for large amounts



Cooking oil

Soak into paper or cloth, or harden using a coagulant. The city collects cooking oil.

[*See page 9.](#)



【Reduce raw kitchen waste!!!】

Raw waste from the kitchen accounts for 35% of all combustible waste and is the most abundant form of combustible waste. Kitchen waste can be reduced with just a little effort.

- ① Plan your shopping well
- ② Be careful not to prepare too much food
- ③ Do not waste ingredients or leave food uneaten.
- ④ Drain to remove excess water before putting the waste out.

These are all things that you can do right away. Make sure you start as soon as possible.

【Recycling old clothing】

What do you do with clothing you don't need anymore? Try recycling old cloth (clothes) before you throw them away next time!

- ① Submit at a flea market or bazaar.
- ② Use the Recycling Activity Center or recycling shops.

[*See page 9.](#)

- ③ Use group collections.

[*See page 14.](#)

Metal · Ceramic · Glass

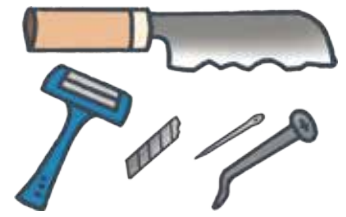
Please take metals, ceramics and glass waste out to the **recyclable/waste collection point** twice a month on the collection day.



Aluminum foils, metals



Ceramics, Glass, Broken Bottles
Wrap broken glass, ceramics, sharp-edged tools, etc. in thick paper and mark “危険” (DANGEROUS).



Cutting tools/needles/razor blades, etc.
Wrap in thick paper and mark “危険” (DANGEROUS).



Small appliances

Please tie up cords neatly.

How to Dispose

Containers with lids (about 60ℓ) or See-through plastic bags

Lighters

Lighters
Put them in a separate, clear bag.

Products contain mercury

Products contain mercury Put them in a separate see-through bag to dispose of



Fluorescent light bulbs

Place these in the boxes they came in, or wrap them in newspaper, etc.



Household Mercury Thermometers, Mercury Blood Pressure Gauges
Dispose of these items in a small, transparent plastic bag so that no mercury leaks out.



The following nine items, such as used small electronic devices, are recycled through collection offices and collection boxes.

Mobile phones	Digital cameras	Portable video cameras	Mobile music players	Mobile game devices	Portable car navigation systems,
Electronic dictionaries	Calculators	Accessories such as remote controls, AC adapters and cables			

Please pay attention!

- For removable batteries, please remove batteries, etc.
- For information on disposing of removed batteries, see page 11
- Please remove or delete personal information from device memory.
- Collected small electric devices cannot be returned.

- Collection box** ● City Office (1F) ● Branch Offices ● Environmental Studies and Information Center (Eco Gallery Shinjuku).
- Collection office** ● Waste Reduction and Recycling Division. (city office, 7F) ● Shinjuku recycling center ● Nishiwaseda recycling center ● Shinjuku waste collection office ● Shinjuku-Higashi waste collection center ● Kabukicho waste collection center ● Shinjuku Waste and Recyclable Resources Center

Through routine recyclables/waste collections In addition to the above, small electrical products are turned into resources by sorting after collecting as metal, pottery, and glass waste.

Large Sized Waste

Prior reservation/
Fee required
in front of home

Please make a reservation with
the Large Sized Waste Reception
Center for collections.

Application by Phone

☎03-5304-8080

Mon.–Sat., 8:00 am–7:00 pm
except year-end/new year holidays



Online Application (available for 24 hours a day)

except during system maintenance and year-end/new year holidays



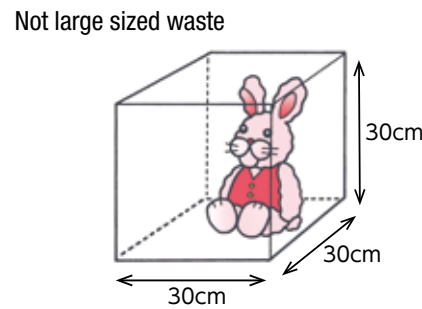
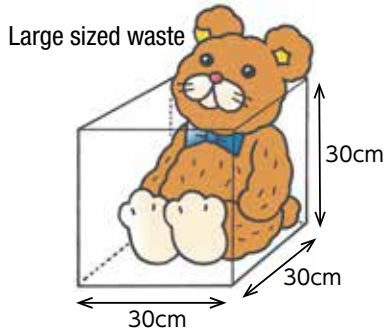
<https://www.shinjuku-sodai.com>

Large sized wastes are mainly durable consumer goods (things that can be used for a long period of time) from household life with a length longer than 30cm one side such as furniture, bedding, electric appliance, bicycle, etc. Please apply as large sized waste even if dismantled or disassembled. In addition, we may not accept depending on size and weight. If you cannot access by the telephone or the internet, please contact Waste Collection Office or one of Waste Collection Centers

※The city does not collect large sized waste generated by businesses and business activities.

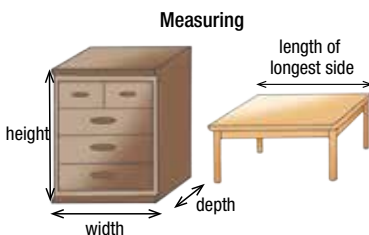
Anything that does not fit in the cube below will be a large sized waste.

※Even if dismantled or disassembled, they are handled as a large sized waste.



Steps for disposal of large sized waste

1
Please apply upon confirming
quantity, size, weight,
materials, etc. of the waste.



2
Please be sure to purchase a "Large-Sized
Waste Disposal Ticket" in **Shinjuku**

Shinjuku city has an **A Ticket (200 yen)** and a **B Ticket (300yen)** for paid large-sized waste disposals, so purchase them in combination to match the disposal fee. Shinjuku city's disposal tickets for paid large-sized waste disposal services are available at shops with the "Paid Waste Disposal Ticket Office" mark, convenience stores, supermarkets, waste collection offices, local waste collection centers, local special district offices, and the Waste Reduction and Recycling Division (City Office 7th Floor).



3
Please take it out before
8:00am on the collection day.

Please dispose the waste at the location you informed on applying by 8 am on the pick-up day. Write the collection date, reception number or your name on the paid large-sized waste disposal service ticket(s) and attach it to the item so it can be seen easily.



**Items not collected as
Large Sized Waste**

air conditioners, TV sets, refrigerators, freezers, washing machines,
clothes driers, personal computers, tires, pianos,
fire-resistant safes, fire extinguishers, concrete blocks

*See page 11 · 12.

Please use the recycling center

The Recycling Center effectively utilizes resources by going to your home to collect recyclable furniture that you don't need anymore, repairing/restoring it, displaying it for sale, and holding a mini-flea market. (Nishiwaseda). They also run the consignment shop 'Moichido Club' (Shinjuku) and have flea markets, clothes drop boxes ("YOFUKU POST") and cooking oil collection, with the idea to effectively use recyclables.



- Shinjuku Recycling Center Location: 4-10-2 Takadanobaba ☎: 03-5330-5374 FAX: 03-5330-5371
- Nishiwaseda Recycling Center Location: 3-19-5 Nishiwaseda ☎: 03-5272-5374 FAX: 03-5272-5384
- Website <http://www.shinjuku-rc.org/>

Please inquire to the waste collection office in your jurisdiction or any waste collection centers

Lending bird nets

The city lend out bird nets at no cost for preventing damages to recyclables/waste at collection points from animals such as crows and cats. (As a rule, one net per one recyclables/waste collection site)

In addition to Waste Collection Office and Waste Collection Centers, you can also lend out them at Special Branch Offices and Waste Reduction and Recycling Division on the 7th floor of Shinjuku City Office.

There are 3 sizes: Large(3×4m), Medium(2×3m), Small(1.5×1.5m)

Size guide: Large - for 10 or more households, Medium - for less than 10 households, Small - for individual household.



Collection of dead animals

The city collects carcasses of pets such as dogs and cats for a fee (3,000 yen per animal under 25 kg). Carcasses are temporarily stored and handed over to an animal cemetery, where a joint cremation and burial take place.

- If there is a dead animal whose owner is unknown on one's own property, driveway, empty lot, etc, the owner or manager of the land is responsible for paying the fee in disposing of the dead animal as a general rule. Please contact the land owner/manager or Waste Collection Office/Waste Collection Center in your jurisdiction.

For more information, please contact the appropriate road administrator as they will handle dead animals on the street.

- ▶ For National Roads: Tokyo National Highway Office, Yoyogi Branch ☎03-3374-9451
- ▶ For Prefectural Roads: Local Waste Collection Office/Center
- ▶ For city Roads: Tobu Construction Office (East of Meiji-dori) ☎03-5361-2454
Seibu Construction Office (West of Meiji-dori) ☎03-3364-2422

Visits for collections are available for the following people

Visits for collections will be made as needed upon field surveys. Applicable Persons

- Households made up only of persons 65 years or older requiring nursing care or disabled persons who have difficulty making it to the recyclables/waste collection points
- Households with only one person aged 85 years or older who does not get regular visits from relatives or acquaintances

There is a fee for disposing of waste in large amounts

There is a fee for disposing of a large amount of waste all at once arising from general households when moving, cleaning out rooms, cutting garden tree branches, etc. (When having garden trees trimmed/clipped by a specialist, have them take the branches away with them.) For households to put out four or more 45-liter bags at once, they must apply beforehand at the waste collection office or waste collection center that administers waste in their area.

Illegal Dumping is a crime

Violations of the Waste Management and Cleaning Law will result in imprisonment of up to 5 years or a fine of up to 10 million yen (300 million yen for corporations) or both.

If you find illegal dumping, please dial 110 to report it.

- Illegal dumping on private roads, premises, and vacant lots will be handled and disposed at the responsibility of the owner or the manager of the land, and the cost will be borne by the owner or the manager. Please manage your land to prevent illegal dumping on a daily basis. In addition, please inquire to the waste collection office, waste collection centers of each jurisdiction about disposal method.
- For illegal dumping at recyclables and waste collection points (excluding individual collections and apartments), please consult with the waste collection office or waste collection centers.
- For illegal dumping on roads, please contact each road management offices.

National roads: Tokyo National Highway Office Yoyogi Branch ☎ 03 - 3 3 7 4 - 9 4 5 1

Metropolitan roads: The Third Construction Office ☎ 03 - 3 3 8 7 - 5 1 4 4

City roads: Traffic Affairs Division Regulation and Compliance Section ☎ 03 - 5 2 7 3 - 3 8 4 7

Household air conditioners, TV sets, refrigerators, freezers, washing machines, and clothes driers

They are not classified as large-sized waste. The Home Appliance Recycling Act requires them to be recycled and there are recycling and transportation fees. You must make a reservation with a **retail outlet** or the **Home Appliance Reception Center** for collections.

● When purchasing a replacement

Ask the retail outlet where you bought the new item for details

● When only disposing of an item

① Please apply with the retail location you purchased the item at.

② If you are unable to drop off your items at the retailer the items were purchased at because it has gone out of business, etc., please contact the Home Electric Appliance Reception Center (☎0570-08-7200). <Hours> Mon. through Fri. 9:00 am to 5:00 pm (closed on holidays)
website <https://kaden23rc.jp>

③ When transporting the item yourself directly to the designated collection location, please inquire to Japan Home Appliances Association Home Appliance Recycling Ticket Center (Toll Free Dial 0120-319-640 ☎03-6741-5605 between 9am and 6pm except Sundays and holidays for both/FAX 03-3595-0761/website <https://www.rkc.aeha.or.jp>)



Computers They are collected/recycled by the manufacturers Ask the manufacturer, etc. of the item to be disposed of for details.

● Collection through courier services

Authorized businesses based on the Small Home Appliance Recycling Law are collecting PCs through courier services. Please contact **Renet Japan Recycling Corporation** (website <https://www.renet.jp/> ☎0570-085-800) and request for collection.

● Collection by manufactures

According to the Law for the Promotion of Effective Utilization of Resources, PC manufacturers will collect PCs. If you do not know the manufacturer's contact information (home-built PC, bankruptcy, business withdrawal, etc.), please contact the **PC 3R Promotion Association** (website <https://www.pc3r.jp/> ☎03-5282-7685).



Small rechargeable batteries Collected at cooperating stores (home electronics retailers, etc.) registered with JBRC Association

According to the Law for Promotion of Effective Use of Resources, rechargeable batteries or mobile batteries* that are used for laptop computers, digital cameras, electric bicycles, etc. are required to be recycled by manufacturers or others. Please bring them in to the JBRC cooperating stores (home electronics retailers, etc.) but **do not take to the recyclables and waste collection points**. The information about cooperating stores can be found at the website of JBRC Association (☎03-6403-5673 https://www.jbrc.com/general/recycle_kensaku/)

* **Mobile batteries** (portable power storage device which main function is to charge mobile phones and smartphones) will be collected whole system. **Please do not disassemble them.**



Button batteries

Those batteries used in electronic thermometers, hearing aids, etc. Based on the UN Environmental Program's "Minamata Treaty" and the enactment of the "Law Concerning the Prevention of Environmental Pollution from Mercury" in Japan, the Battery Association of Japan has been voluntarily conducted collection and proper processing of used button batteries (type codes: SR, PR, LR). Please bring them to battery collection cans at collection cooperating shops. Please inquire Button Battery Collection Promotion Center for collection cooperating stores. (website <http://www.botankaishu.jp/> / ☎0120-266-205 between 9am and 5pm on weekdays /FAX 03-6862-6093).



Ink cartridges Please cooperate for Ink cartridge Return-Home Project

Shinjuku City is participating in a project jointly operated by printer manufacturers to promote the recycling of used ink cartridges. Put the cartridge of the home inkjet printer in the designated collection box. Please find information about participating manufactures and locations of collection boxes from the website of Ink Cartridge Returning-Home Project (<http://www.inksatogaeri.jp/>). Information: Shinjuku City Waste Reduction and Recycling Division ☎03-5273-3318



Items that the city will not collect

Items difficult to process

Ask the store of purchase or the manufacturer to take it over, or ask a professional.



Gas cylinders
other than cassette type



Petroleum
(gasoline, light oil, thinner, etc.)



Paint



Chemicals



Batteries



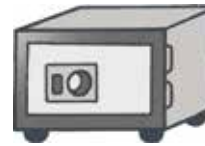
Fire
extinguisher



Tires and wheels
(for automobiles
and motorcycles)



Piano



Fireproof safe



Soil, sand, stones, blocks, sludge

※ If you are unsure of a specialist, contact your local waste collection office or waste collection center.

● Take used syringes and needles to pharmacies

It is very dangerous to take out the syringe used for home medical care as garbage.
Return unnecessary syringes with needles and injection needles to the pharmacy
where you purchased them.

※ Please do not take to recyclables and waste collection points.



Business recyclables/waste must be disposed privately as a general rule

It is stipulated by law that recyclables and waste derived from companies, shops, offices and other business activities should be properly disposed of at the responsibility of each business owner. If you cannot process them yourself, you must entrust them to a licensed contractors* and process them properly.

* Please find licensed contractors at the [Business Waste](#) city's web site.



※ Business recyclables/waste include not only from business activities such as shops and companies, but also from public interest activities such as education and welfare that are not for profit. Lunch boxes, bottles, cans, PET bottles, etc. that are trashed after employees eat and drink become business recyclables/waste. If you are a small business that is unable to dispose of it yourself and is difficult to outsource to a licensed contractor, please contact your local waste collection office or waste collection center.

Let's build a resource recycling-oriented society together

A “resource recycling-oriented society” is a society that minimizes burdens on the global environment and recycles waste products by minimizing generation of waste, reusing, and disposing properly. We must reexamine our daily habits and try to reduce waste while effectively utilizing our resources. Let us citizens, businesses, and Shinjuku city face this waste problem and work together to build a resource recycling-oriented society for the sake of the earth and our future.

The Roles of City's Residents, Businesses, and Shinjuku City

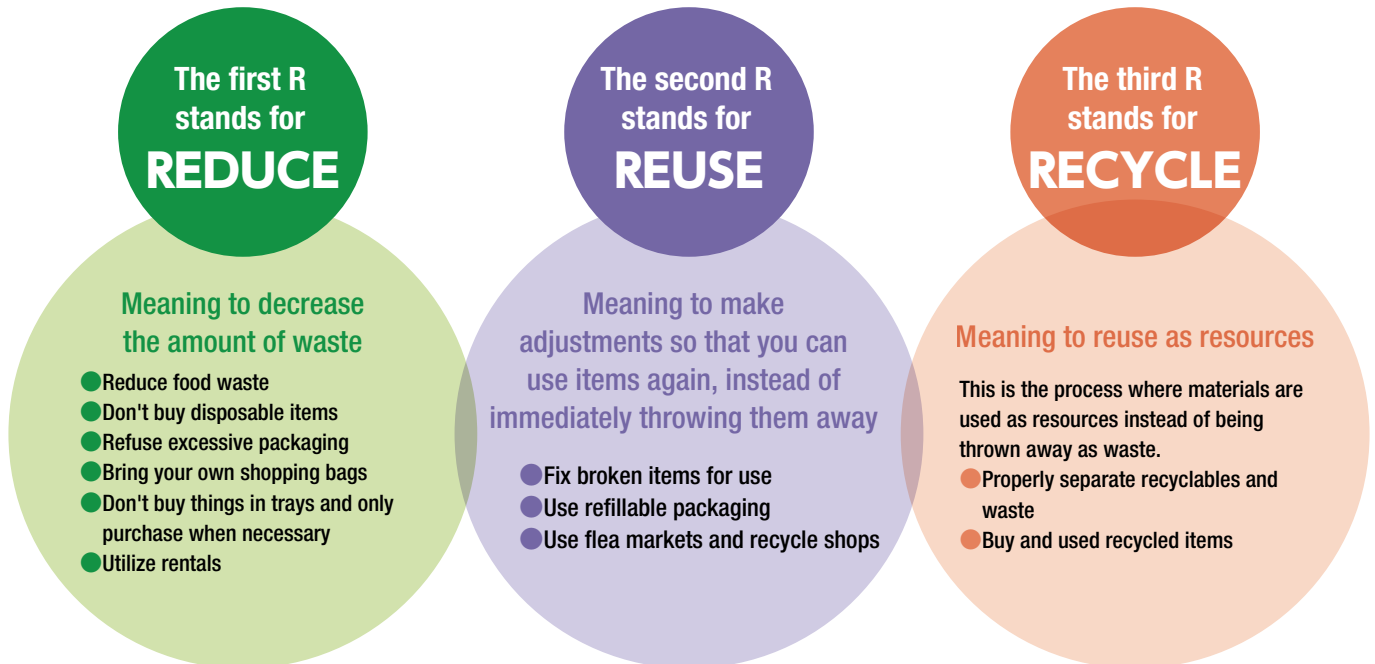


Reducing Waste with the Three Rs

“The three Rs” are the key in reducing waste.

Check your daily habits once again with “The three Rs” in order to reduce waste.

Waste reduction and the recycling of resources can be realized with just a little effort by each and every person.



The Earth's resources are limited. It is important for us not to buy unnecessary goods and to recycle what can be recycled so that natural resources that have taken billions of years to produce are not used up by our generation. Let us lead a lifestyle where we properly separate resources and waste every day so that we can reuse unwanted things as resources.

Recyclable/
Waste Collection Days
Recyclable resources
Combustible garbage
Metal·Ceramic·Glass
Large Sized Waste
Other inquiries
Recycling by
manufacturers
Items that the city
will not collect
Let's build a resource recycling-
oriented society together

Please participate in group collections

Group collection activities are voluntary recycling activities where residents from ten households or more gather to specify collectible items (newspapers, magazines, cardboard, old cloth, aluminum cans, etc.), collection sites, and collection dates for handing waste over to waste collectors. Town councils, residents' associations, apartment association boards, etc. are currently registered as active groups in Shinjuku city.

The advantages of group collections include; "Resources are collected efficiently in large quantity.", "It heightens recycling-consciousness.", "It leads to resource saving and environmental beautification." It also helps revitalizing the community by cooperating with each other in the neighborhood. Please participate proactively as an accessible recycling activity.

How to join

- Method1** Join the active registered group in your neighborhood.
- Method2** Create a new group and have it registered.

➔ Please inquire with the **Shinjuku Waste Collection Office Operation Section (Direct line: 03-3950-2962)**



The Shinjuku city supports registered groups.

Payment of Incentives..... Payments of rewards according to amounts collected are made twice a year.

Provision of Support Items..... Cotton work gloves, garbage bags, brooms, trolleys, etc. are supplied once a year according to the request survey. Items such as collection site flags and notice flyers are also supplied as needed.

Amount of Waste and Disposal Costs in Shinjuku City

Waste Volume and Population

Waste per person every day = waste volume ÷ population ÷ 365 days

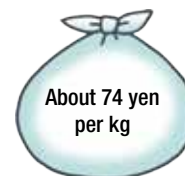
●2008 (population as of Jan. 1, 2009)
 Population: 314,592
 (including 33,555 registered foreign nationals)
 Amount of Waste: 83,223t
 Amount of waste per person: 725g

●2021 (population as of Jan. 1, 2022)
 Population: 341,222
 (including 33,907 registered foreign nationals)
 Amount of Waste: 68,762t
 Amount of waste per person: 552g

Disposal Costs

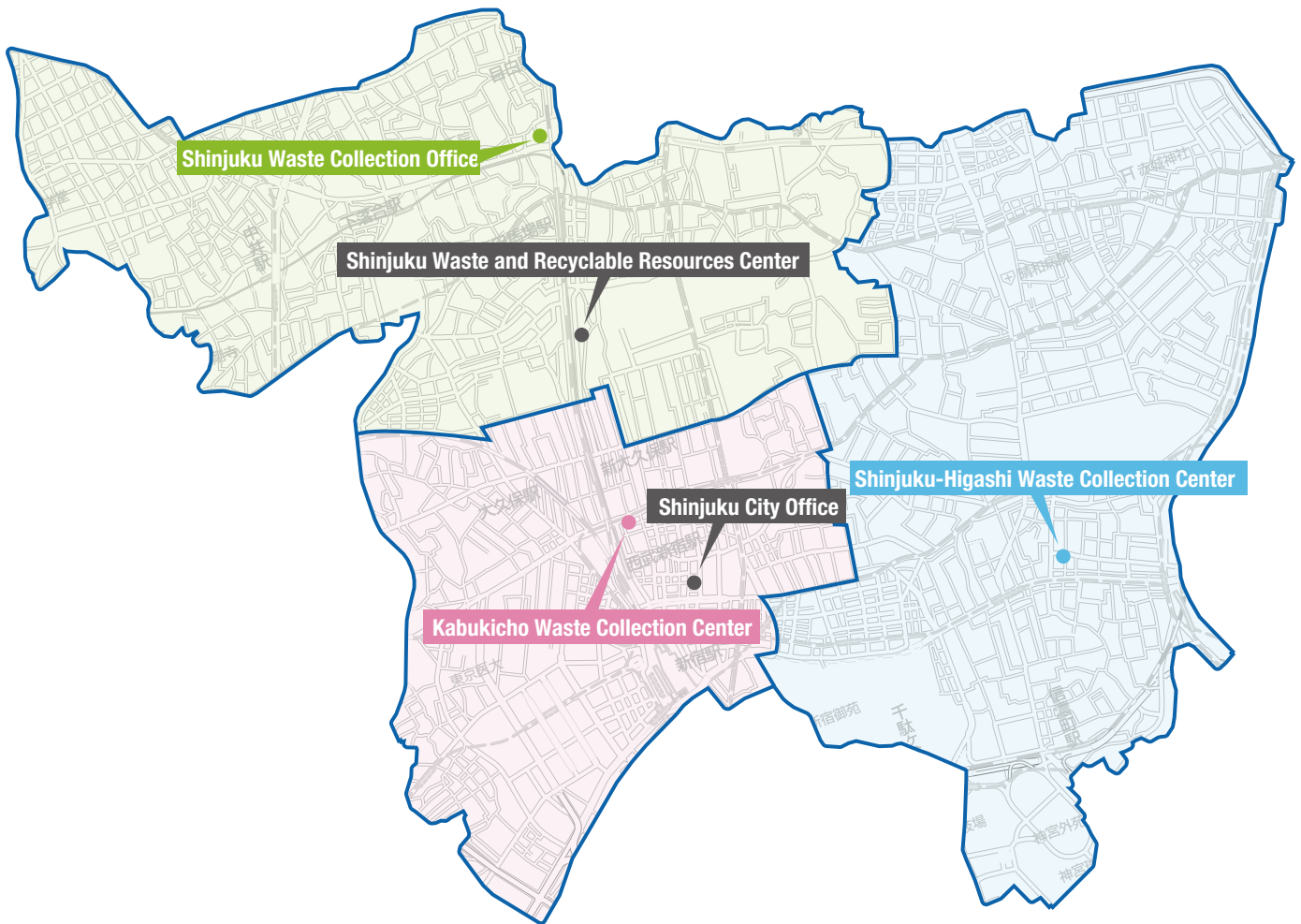
Fiscal Year 2021

- Waste (combustible waste, metals/ceramics/glass, large-sized waste) processing fees
 The costs from collection/transport to processing/disposal covered by the city.
- Costs to recycle resources (for 1 kg) Costs÷amount collected
 The costs covered by the city from collection to recycling. (Gains on disposals are subtracted. Products subject to the Containers/Packaging Recycling Act include recycling expenses (covered by Shinjuku city).



Recyclable Paper 31yen	Bottles 128yen	Aluminum 50yen	Steel Cans 144yen	PET bottles 172yen	Plastic Containers and Wrapping 190yen
-------------------------------	-----------------------	-----------------------	--------------------------	---------------------------	---

●Group collections: about 16 yen/kg expenses÷ volume collected ※ You will find these information on our web site, too.



For more information, please contact the waste collection office/waste collection center that administers waste in your area. (Service only available in Japanese)

- **Shinjuku Waste Collection Office** ☎ 03-3950-2923 FAX 03-3950-2932 Shimo-Ochiai 2-1-1
- **Shinjuku-Higashi Waste Collection Center** ☎ 03-3353-9471 FAX 03-3353-9505 Yotsuya-San-ei-cho 10-16
- **Kabukicho Waste Collection Center** ☎ 03-3200-5339 FAX 03-5272-3494 Kabuki-cho 2-42-7
- **Waste Reduction and Recycling Division** ☎ 03-5273-3318 FAX 03-5273-4070 Kabuki-cho 1-4-1 (City Office, 7F)

[Homepage](#)
Waste Shinjuku

