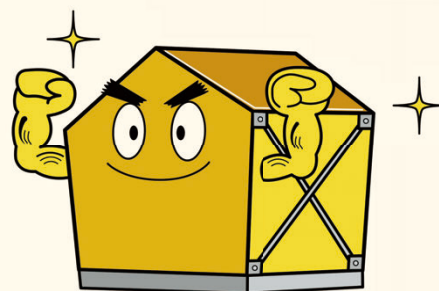




It is important to take measures in order to keep your furniture from falling over and make your home more earthquake-proof so that you can prevent accidents, protect your valuable property and reduce waste from disaster even a little bit.  
Be sure to always be prepared!

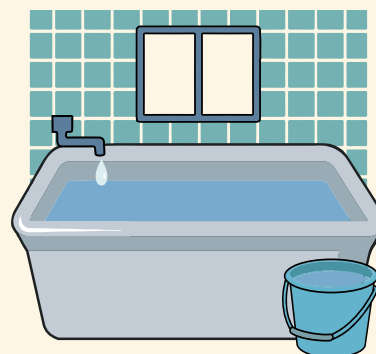
Remember to take steps to prevent your furniture from falling over.



Make your home more earthquake-proof.

Stock up for 3 days.

Keep in mind to store water to secure daily life water.  
Additionally, each family should stock up for portable toilets for about 3 days in case there are water outages.



## Constant Preparation and Caution During a Natural Disaster

- Measures to Take Beforehand When Reducing Disaster Waste -

Clean up carefully and calmly.

Remain calm and first secure a space for sleeping while exercising appropriate caution against events like aftershocks when cleaning up the inside of your house.



Please Pay Attention to the Information from Shinjuku City and Tokyo

In addition to information regarding the establishment of evacuation sites and toilet facilities, Shinjuku City will notify you about temporary disposal sites, garbage collection schedules during and after a natural disaster and other relevant information. Please also pay attention to information from Tokyo as well.

Shinjuku City will provide information regarding the natural disaster by using radio and TV broadcasting as well as using publicity cars and SNS. Multilingual information will also be available for foreign residents, so please let your foreign neighbors know.



The Preparational

# Disaster Waste



# Handbook

- Shinjuku City Disaster Waste Disposal Planning Overview Edition -

The Preparational Disaster Waste Handbook  
- Shinjuku City Disaster Waste Disposal Planning Overview Edition -  
Issued 3/2020

Editor

Shinjuku City Environmental Management Department  
Waste Reduction and Recycling Division  
Waste Reduction Planning Section  
Print Production Number: 2019-12-3915

1-4-1 Kabukicho, Shinjuku City,  
Tokyo 160-8484  
Tel: 03-5273-3318 (Main)  
Fax: 03-5273-4070



What happens to trash that comes from a disaster?



What is disaster waste?



Requests when throwing out disaster waste



How is disaster waste disposed of?



Points to remember for reducing disaster waste in your daily life

## Purpose of This Plan

There are predictions that there will be an enormous amount of disaster waste in Shinjuku City as well in the future if a major disaster were to happen within Tokyo. Disposing of disaster waste quickly and appropriately is absolutely essential to ensure safety, peace of mind when it comes to the health of residents and environmental hygiene and quick disaster recovery.

For this reason, Shinjuku City established the "Shinjuku City Disaster Waste Disposal Plan" with the goal of speeding up disaster recovery and reconstruction by establishing basic rules pertaining to the disposal of disaster waste such as disposal methods and implemented systems for disposing disaster waste in the event of a natural disaster and by promptly and properly disposing disaster waste, we can ensure a hygienic environment after a disaster.

## Disaster Waste

Natural disasters such as earthquakes can create a large amount of disaster debris such as broken wood and blocks that come from collapsed houses and buildings.

Additionally, there will be trash such as broken dishes, glass and broken furniture and appliances even if a house has not collapsed.

Moreover, there will also be daily waste from those taking refuge in evacuation shelters and human waste from provisional toilets.

As such, debris, trash and human waste that accompanies a natural disaster has been given the general term of "disaster waste".



## Predicted Damage

Below indicates the type of damage that is predicted in the event that an earthquake was to happen directly under the city in the future.

Casualties	Deaths	293 people
	Injuries	6,792 people
Building Damage		5,743 buildings
Other	Those Who Have Difficulty Traveling Home	313,811 buildings
	Evacuees	76,805 people
Amount of Disaster Waste Produced	Disaster Debris	1,371,222 tons
	Disaster Waste*	84,475 tons
	Human Waste	207,837 liters

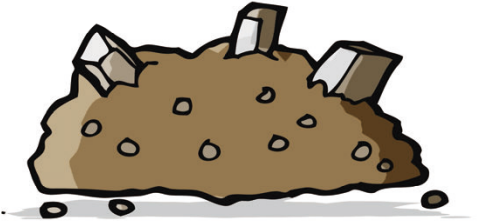
\* Disaster waste refers to the total amount of broken items and evacuation site waste that would be produced for 1 year following a disaster.



## Temporary Disposal Sites

Temporary disposal sites function not only as a place to bring broken items you wish to dispose of such as broken furniture and electronic appliances but also as temporary locations to pile up debris that come from houses that have collapsed or been demolished during and after natural disasters.

Disposing of trash in locations other than the designated temporary disposal sites can cause problems such as obstructing traffic and be the cause of accidents such as fires, foul odors and harmful insects so please avoid disposing of waste in locations other than the temporary disposal sites designated by Shinjuku City.



## Demolition and Removal of Collapsed Buildings, Disposing Debris

As a rule, the demolition of buildings that have collapsed due to disasters such as earthquakes are handled by the owner of the building. However, Shinjuku City may demolish the building in place of the owner for personal residences when the Japanese Government has taken special measures depending on the damage situation.

Additionally, Shinjuku City may similarly also take care of the removal and disposal of debris.

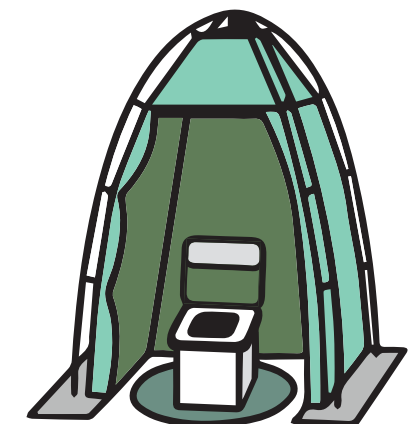


## Disaster Toilets

Flush toilets are not usable when water and sewage services have been damaged in a disaster.

For this reason, please use the disaster toilets set up at evacuation sites or portable toilets that you have stored yourself until water and sewage services have been restored.

Portable toilets that have been used as well as diapers, etc. will be collected as soon as possible. We ask that each household please store these items until collection services have been started.





## Household Garbage

Even when there has been a natural disaster, combustible garbage will be collected as quickly as possible so please continue to separate garbage and follow rules for disposing garbage like usual. However, the collection of garbage other than combustible garbage may be suspended temporarily depending on the scale of the disaster so please keep the garbage at your home until garbage collection has resumed.

### For Those Who Live in Apartments, etc.

Please follow those rules when putting out your garbage if your residents' associations, or apartment association boards, etc., have their own rules for putting out garbage during and after natural disaster.



### Seniors and Those Who Need Assistance

If you need help removing disaster waste such as broken furniture, do not overdo it and request assistance from the Shinjuku Voluntary Center to assist you.

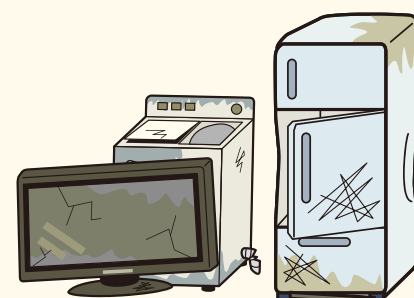


# How to Dispose of Disaster Waste

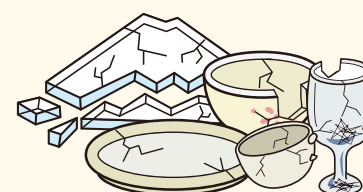
A large amount of disaster waste can be expected when there is a disaster. Properly separating your garbage will lead to quicker recovery and reconstruction. Please follow Shinjuku City's policies and try to dispose of your disaster waste even a day earlier.

## Broken Items

A temporary disposal site will be set up for you to bring trash such as broken furniture, appliances, broken dishes and window glass if a large natural disaster has occurred. Please do not randomly place trash in front of your home or in the road. There may occasionally be restrictions to the types of garbage that you can bring or when you can bring garbage to temporary disposal sites. Be sure to follow the rules at each temporary disposal site.



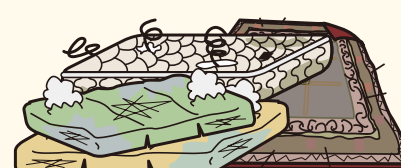
Broken appliances



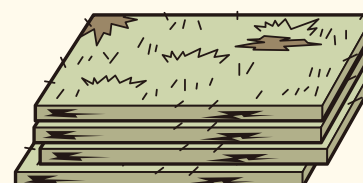
Broken glass and pots



Broken furniture



Rugs, Japanese futons, etc.

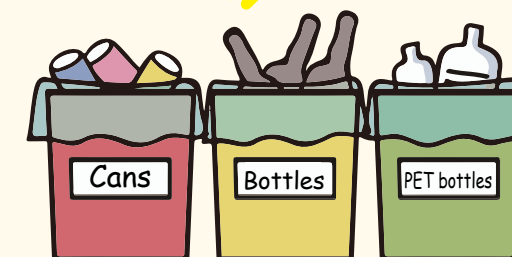


Tatami mats

## Evacuation Site Waste

Even when taking safety in an evacuation site, please be sure to properly separate your garbage. The rules for separating garbage and where it is collected may differ between evacuation sites. Make sure to follow the rules of the evacuation site in order to make things even a little bit more comfortable for others and also to prevent problems from occurring.

Be sure to properly seal things such as items that spoil easily or give off strong odors before throwing them away.



Please be sure to throw things away at the designated locations for each evacuation site. Also follow the rules for separating garbage.

### For Those Having Difficulty Getting Home

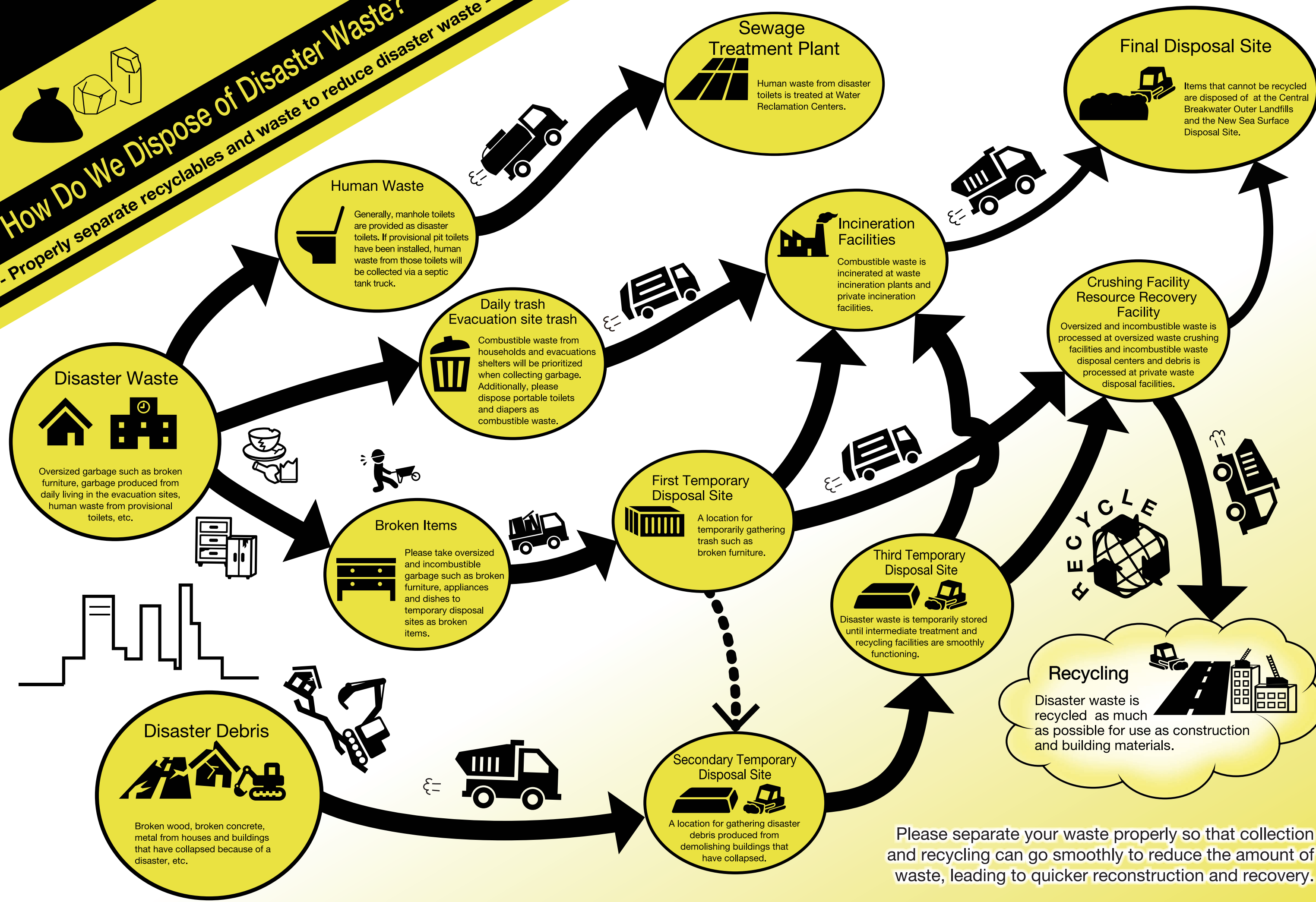
Those who are not able to go home or get around due to transportation services and traffic being disrupted during and after a natural disaster should try to remain in their offices, schools and other places they are currently located. If you produce any waste, follow the administrator of those facilities and separate and throw away your waste in the designated location.

Please do not throw disaster waste away in locations other than the temporary disposal sites. Also be sure to properly separate your garbage when taking it to a temporary disposal site.



# How Do We Dispose of Disaster Waste?

- Properly separate recyclables and waste to reduce disaster waste -



Please separate your waste properly so that collection and recycling can go smoothly to reduce the amount of waste, leading to quicker reconstruction and recovery.