

How to Separate and Dispose of Recyclables and Wastes from Business Activities

In
Shinjuku
City

The collection fee of the recyclable resources and wastes from the business activities must be paid!

Shinjuku City Business-Related Paid Waste Disposal Tickets (stickers) must be purchased and attached to the recyclables and wastes.



Basic information on business recyclables and wastes



In principal, business operators shall dispose of recyclables/wastes left as a result of their business activities on their own!

Waste Management and Public Cleansing Act, Article 3, paragraph 1 stipulates that business operators shall properly dispose of recyclable resources and wastes left as a result of the business activities, such as company, stores, offices and other businesses, on their own responsibilities. If they do not have the ability to dispose of their recyclables and wastes properly, they should entrust management and disposal to a licensed waste-disposal service vendor*.

☆Business-related recyclables/wastes include not only recyclables/wastes from business operations like stores and companies, but also non-profitable activities, such as education and welfare services. Packages of lunch and bottles, cans, and PET bottles of beverages that are purchased by employees are also regarded as the business recyclables/wastes.



Collectible business recyclables and wastes

Small entrepreneurs that cannot dispose of their recyclables/wastes on their own and have the difficulty with entrustment of disposal to a licensed waste-disposal service vendor are provided with charged waste collection service of Shinjuku city. **Shinjuku city collects the business recyclables/wastes as long as it does not interfere with collection operation of general household recyclables/wastes.** The entrepreneurs that cannot separate and sort wastes according to the rules shall entrust the disposal of wastes to a licensed waste-disposal service vendor*.

*For further information on licensed waste-disposal service vendors, visit the official website of Shinjuku city and search by "business waste (事業系のごみ)".



When you put out recyclables/wastes, follow the rules specified by Shinjuku city which are shown below. Please note that if a sticker is not attached properly, or recyclables and wastes are not sorted correctly, neither recyclables nor wastes will not be collected.

Business-Related Paid Waste Disposal Ticket (hereafter “sticker”)

1 Recyclables (recyclable papers, plastic containers and packaging materials, bottles, cans, PET bottles, spray cans · cassette gas cylinders · batteries) and wastes from business activities are charged!

Ensure that Shinjuku City Business-Related Paid Waste Disposal Tickets (stickers) are attached to business-related recyclable resources/wastes. The stickers can be purchased at any shop (convenience stores and other shops within the city) showing the sign on the right, Shinjuku City Office (7th floor of main building), Waste Collection Office, Waste Collection Center, and branch offices. Price of each sticker is shown below.

● **Business-Related Paid Waste Disposal Ticket** (revised on October 1st, 2017)

Extra-large: equivalent to 70ℓ. (for marked wastes)	Pack of 5 (532 yen/bag), 2,660 yen
Large: equivalent to 45ℓ	Pack of 10 (342 yen/bag), 3,420 yen
Medium: equivalent to 20ℓ	Pack of 10 (152 yen/bag), 1,520 yen
Small: equivalent to 10ℓ	Pack of 10 (76 yen/bag), 760 yen



2 How to attach stickers

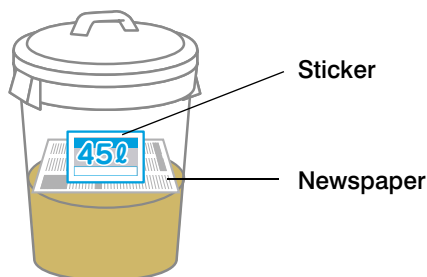
Write down your name

Write down the name of your store, company, or trade name on the sticker.



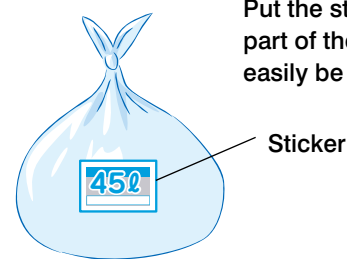
When disposing combustible waste or metals · ceramics and glass

When disposing wastes using a container



Place a newspaper/paper on top of wastes within the container, and attach the sticker on its top.

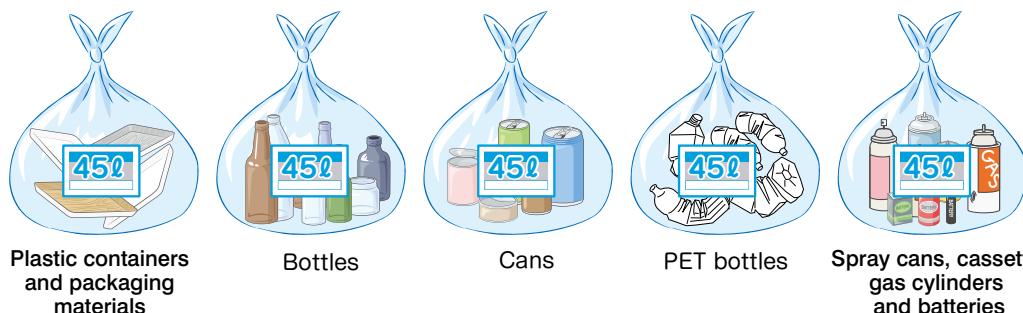
When disposing wastes using a bag



Put the sticker on the upper part of the bag where it can easily be seen.

When disposing plastic containers and packaging materials, bottles, cans, PET bottles, spray cans · cassette gas cylinders · batteries.

Dispose of them in a bag



Sort plastic containers and packaging materials, bottles, cans, PET bottles, spray cans · cassette gas cylinders · batteries, and put each in a separate bag. Attach stickers to each bag according to their size.



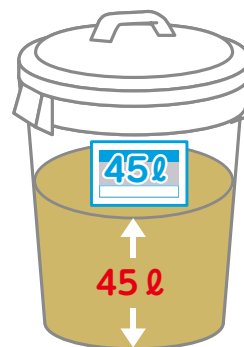
3

Selection of the sticker

When disposing wastes using a container

Choose the sticker depending on the amount of recyclables/wastes within the container. Refer to scale marks inside of the container for estimation of the amount.

60-liters container

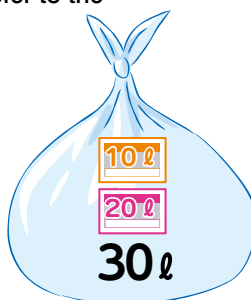


When disposing wastes using a bag

Please select the sticker according to the capacity of the bag that is used, not the amount of the waste. The capacity of the bag is printed on its package.

The maximum capacity of bags for burnable wastes is 45 liters. When using translucent shopping bags, refer to the table below for the selection of stickers.

Size of bags (bottom x height)	Sticker
35cm x 45cm	20 ℓ
30cm x 35cm	10 ℓ

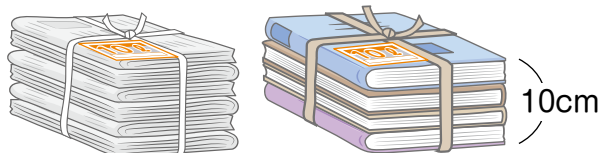


(Example)



When using a bag having a capacity that does not match the stickers available, you can mix and attach more than two stickers.

It is permitted to put the stickers directly on the following recyclables/wastes.

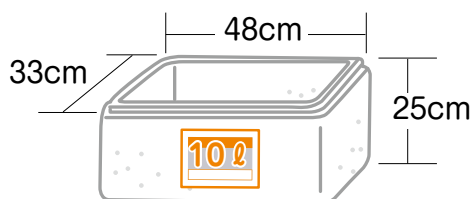


For A4-size

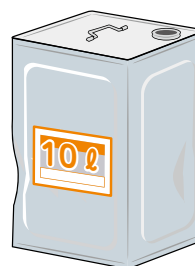
① Newspapers and magazines



② Cardboards



③ Packing polystyrene



④ 18-liters square can

Item	Unit	10-liters sticker
① Newspapers and magazines	Height of 10 cm (Newspapers: folded in four, A4-size)	One sticker
② Cardboards	Two cardboards (Standard of the size: an orange box)	One sticker
③ Packing polystyrene	One packing polystyrene (Dimension: 33 cm x 48 cm x 25 cm)	One sticker
④ 18-liters square can	One can	One sticker

Note: Specifications for units are rough estimates.



How to Separate and Dispose of Recyclables and Wastes

1

Wastes and recyclables should be placed at a designated pick-up station by 8 a.m. on the day of collection.

There will be no change in the time of the collection regardless of hours of business activities. Considering the condition of Shinjuku city, such as having no waste disposal plant within the city and its traffic conditions, the city does not collect recyclables/wastes at a specified time.

We ask all the residents and business operators to place their recyclables and wastes at the designated pick-up station by 8 a.m. on the day of collection*.

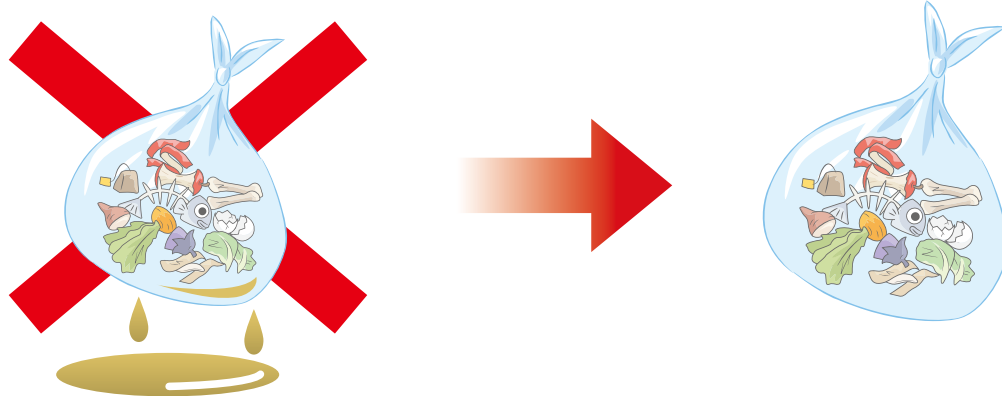
*Refer to "The correct way to dispose of recyclables/waste (a brochure)" and the website of Shinjuku city for the day of the collection of your area.

2

Drain liquid and oil completely before disposal.

Liquid waste including oil and sludge are not collected.

Garbage trucks are not designed to collect liquidized wastes. The collection of the liquid waste could lead to the scattering accident that would cause injuries or bodily harm to passenger. Use a paper or cloth to soak up oil, or use solidifying agents before putting it out for collection.

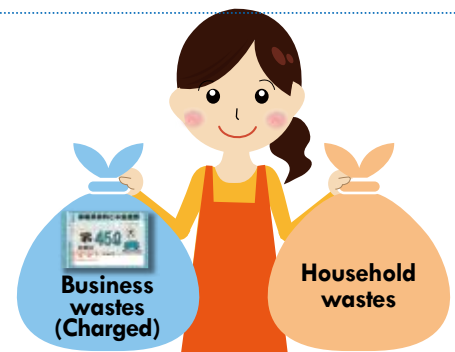


3

Business-related recyclables/wastes and household recyclables/wastes shall be separated.

The garbage collecting fee will not be free even if household wastes are mixed with business-related wastes. Separate wastes properly so that there will be no confusion.

Please note that if stickers are not attached properly, or recyclables/wastes are not sorted correctly, neither recyclables nor wastes are not collected.



4

Large sized wastes from business activities shall be disposed of by business operators.

You cannot ask the Large Sized Waste Reception Center for disposal. Ask a licensed waste-disposal service vendor to collect the large sized wastes.

Inquiries

Shinjuku Waste Collection Office	2-1-1 Shimo-Ochiai	Tel: 03-3950-2923
Shinjuku-Higashi Waste Collection Center	10-16 Yotsuya-San-ei-cho	Tel: 03-3353-9471
Kabukicho Waste Collection Center	2-42-7 Kabuki-cho	Tel: 03-3200-5339